

HOW TO: Connect BYOD Windows to OCSD Network

1. log in to the device

2. Click the Wi-Fi Icon near the time.



or

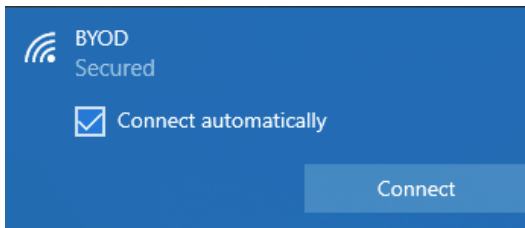


Depending on your setup.

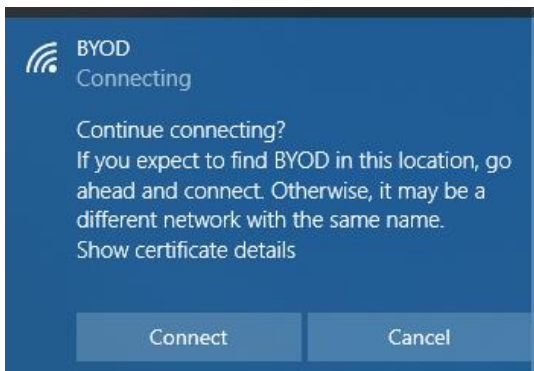
3. Select BYOD.



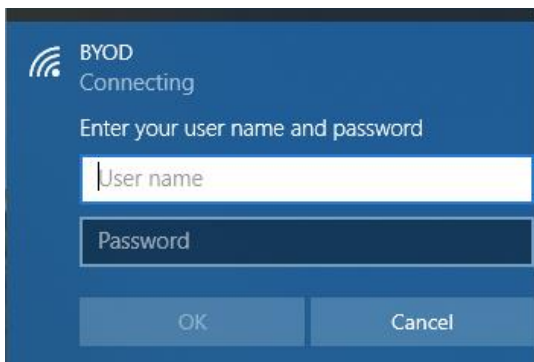
4. Click Connect.



5. If prompted to continue connecting, click connect a 2nd time. This is to verify that you want to connect to this network.



6. Enter your Okaloosa ID and password then click "OK".



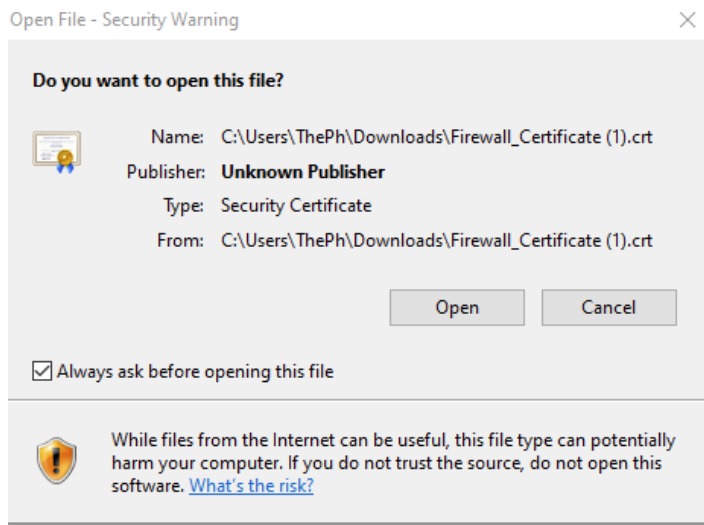
7. Once connected, if you have not installed the Firewall Certificate already, open your web browser and go:

<https://www.okaloosaschools.com/depts/tech/internet-access>

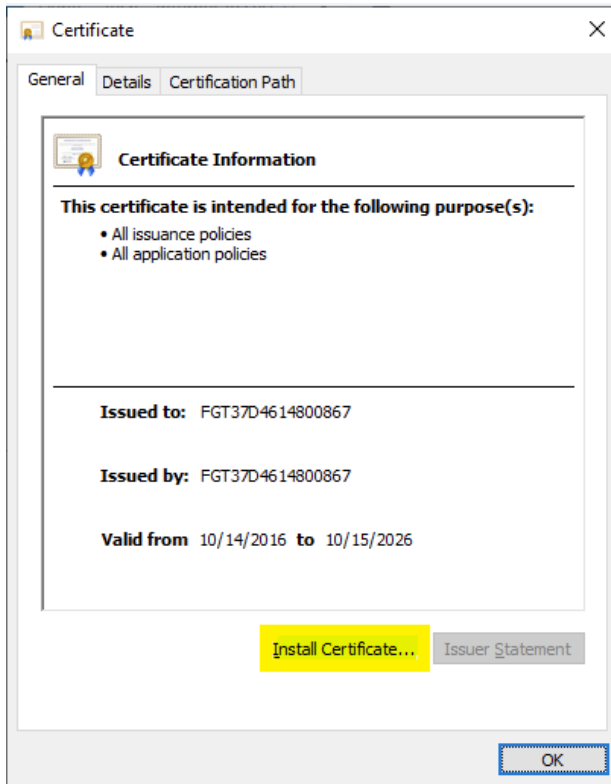
8. At the bottom of the page is the "[Firewall Certificate Download](#)" link, click on this link to download the certificate to install.
9. Double-Click the certificate file.



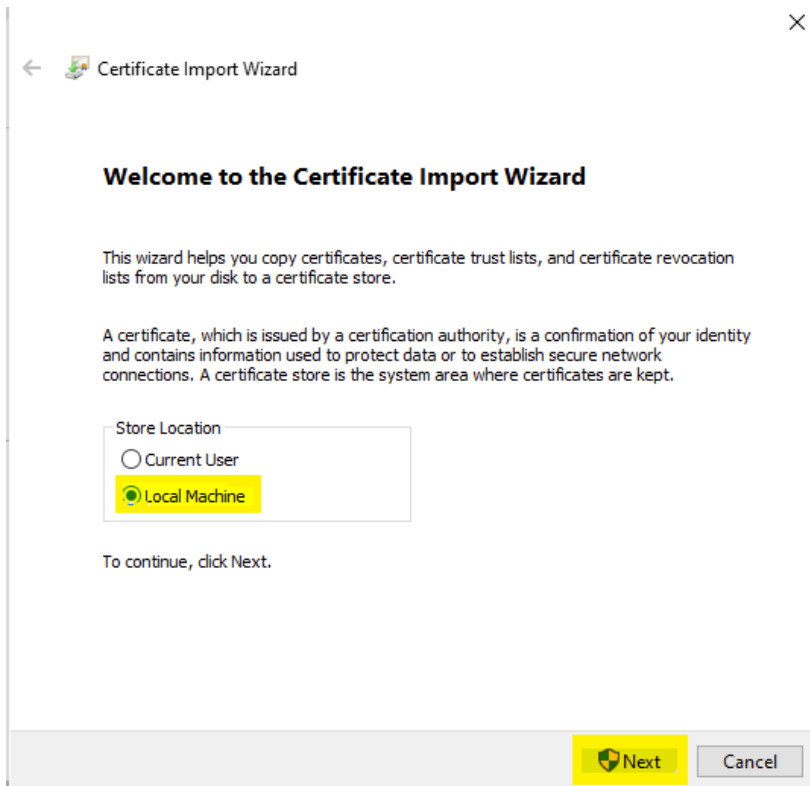
10. Double click Open.



11. Click Install Certificate.



12. Select “Local Machine” and click “Next”.



The image shows a screenshot of the 'Certificate Import Wizard' dialog box. The window title is 'Certificate Import Wizard' with a close button (X) in the top right corner. The main heading is 'Welcome to the Certificate Import Wizard'. Below this, there is explanatory text: 'This wizard helps you copy certificates, certificate trust lists, and certificate revocation lists from your disk to a certificate store.' and 'A certificate, which is issued by a certification authority, is a confirmation of your identity and contains information used to protect data or to establish secure network connections. A certificate store is the system area where certificates are kept.' There is a 'Store Location' section with two radio button options: 'Current User' and 'Local Machine'. The 'Local Machine' option is selected and highlighted in yellow. Below the options, it says 'To continue, click Next.' At the bottom right, there are two buttons: 'Next' (highlighted in yellow) and 'Cancel'.

← Certificate Import Wizard

Welcome to the Certificate Import Wizard

This wizard helps you copy certificates, certificate trust lists, and certificate revocation lists from your disk to a certificate store.

A certificate, which is issued by a certification authority, is a confirmation of your identity and contains information used to protect data or to establish secure network connections. A certificate store is the system area where certificates are kept.

Store Location

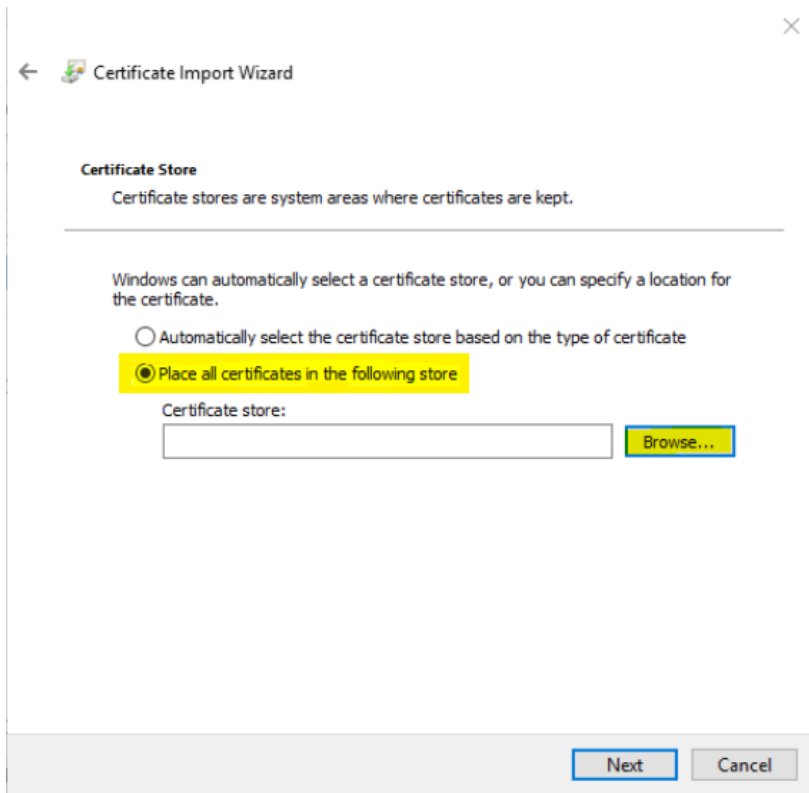
Current User

Local Machine

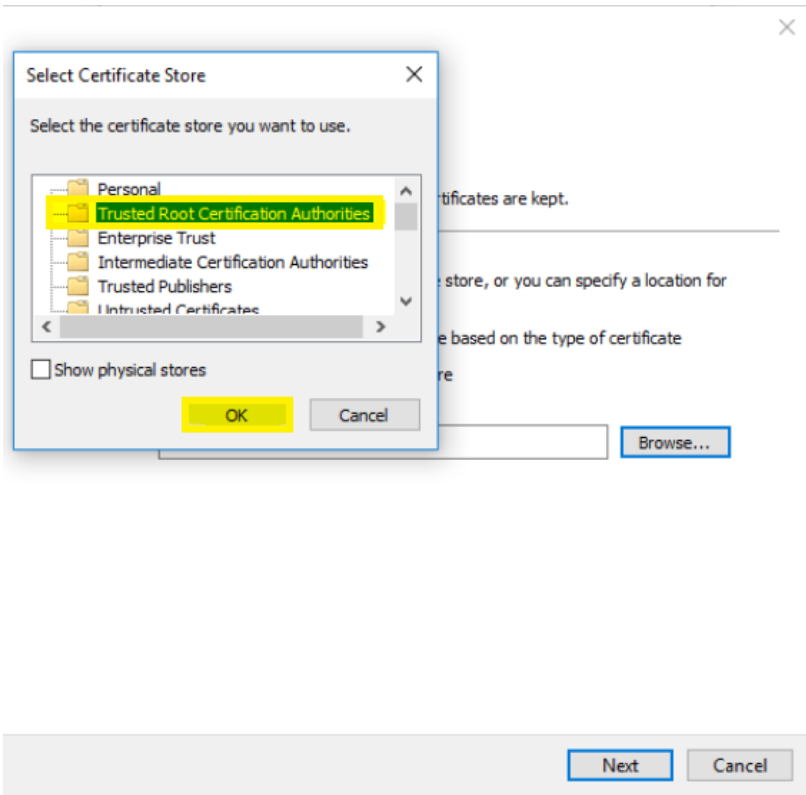
To continue, click Next.

Next Cancel

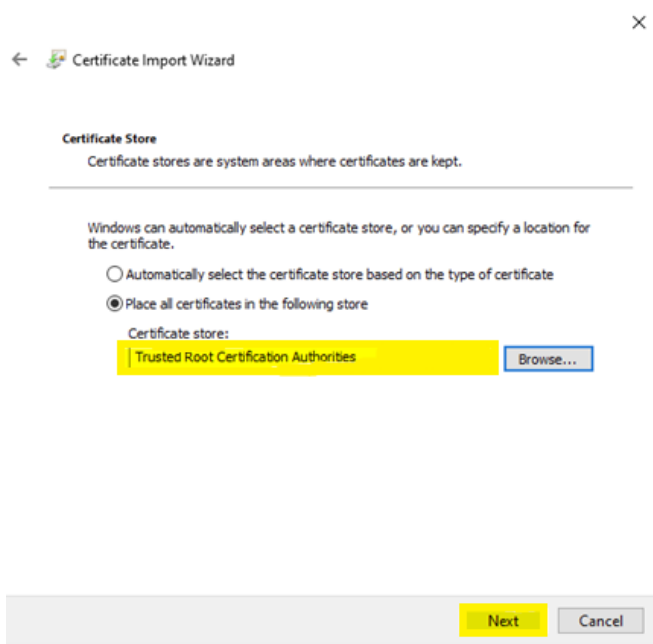
13. Select “Place all certificates.....” and click “Browse”.



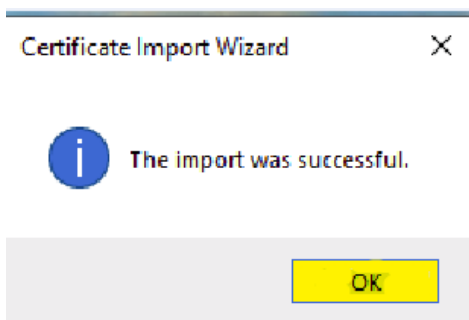
14. Highlight “Trusted Root Certificate Authorities” and click “OK”.



15. Click “Next”.



16. Click “Finish”, and you should get the below message,



Click “OK”. Your device should be able to access the internet at this point.

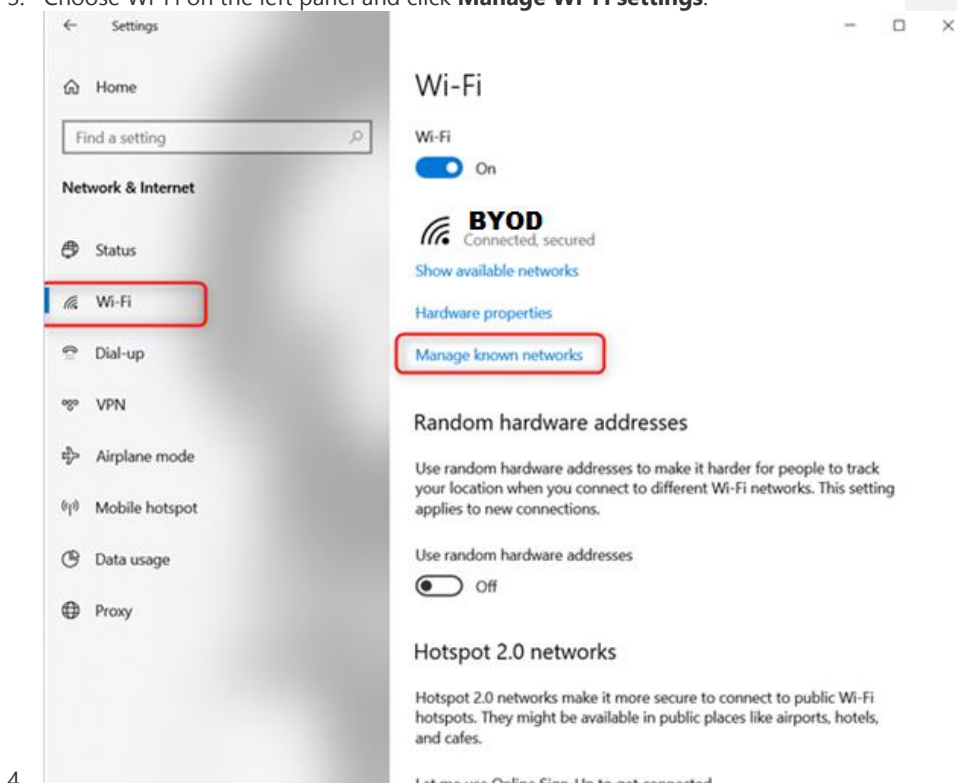
****Note****

When you change your password for OCSD, you will need to forget the BYOD network and go through these steps again so your password will be updated on the device. The steps to do this are as follows:

****Note****

When you change your password for OCSD, you will need to forget the BYOD network and go through these steps again so your password will be updated on the device. The steps to do this are as follows:

1. Click the **Wi-Fi** button from the bottom-right corner of the taskbar.
2. Click **Network & Internet settings**.
3. Choose Wi-Fi on the left panel and click **Manage Wi-Fi settings**.



4. Under **Manage known networks**, click the network you want to delete.

Click **Forget**. The wireless network profile is deleted.

Commented [RC1]:

