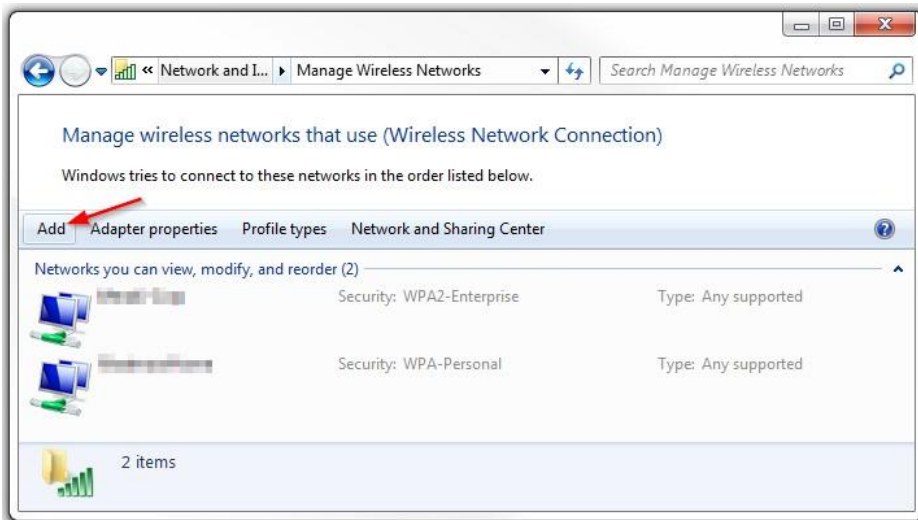
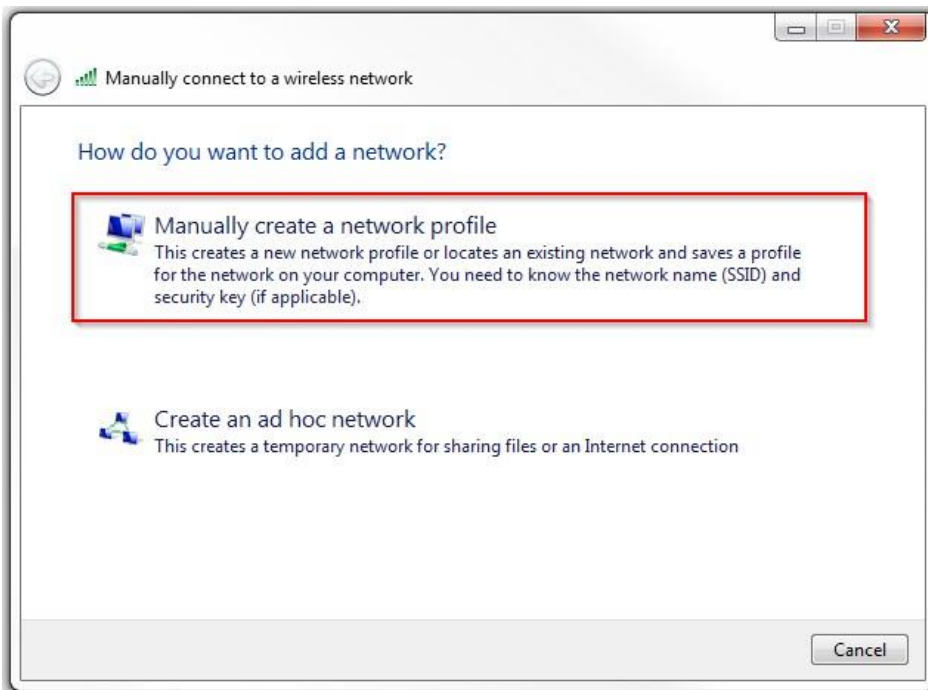


HOW TO: Connect BYOD Windows 7 devices to OCSD Network.

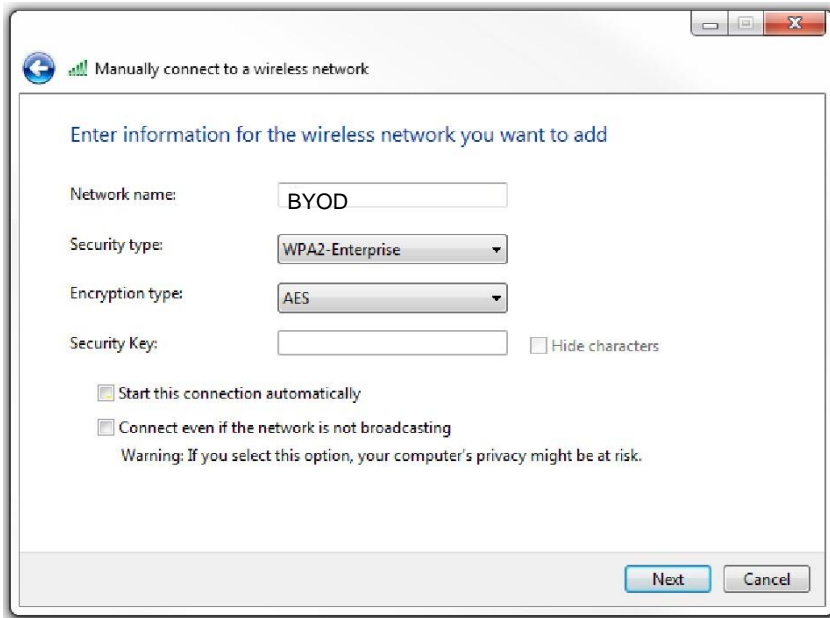
1. Navigate to **Control Panel -> Network and Sharing Center -> Manage Wireless Networks** 2. Click **Add**.



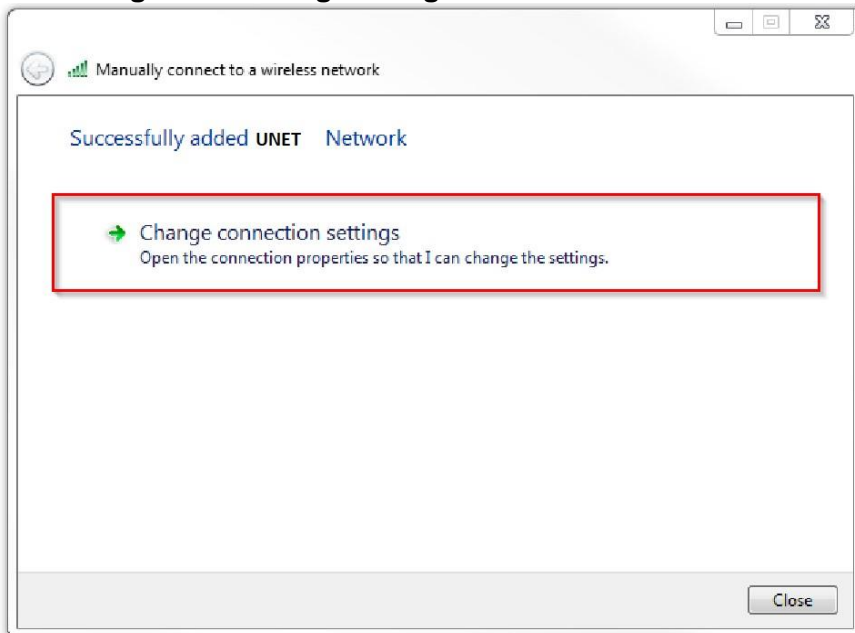
3. In the window that appears, select **Manually connect to a wireless network**.



4. Enter **BYOD** into the **Network Name** box.

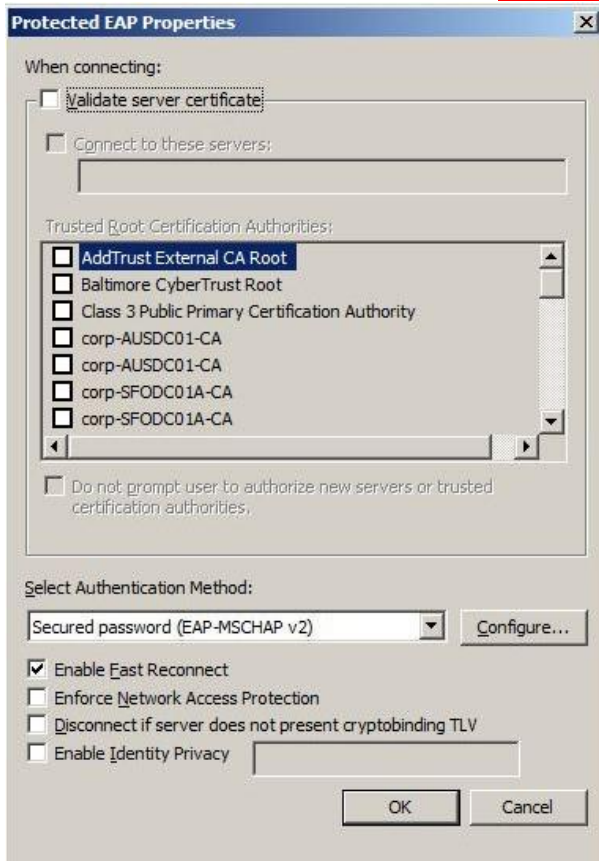


5. Select **WPA2-Enterprise** as the security type.
 6. Select **AES** as the encryption type.
 7. Leave **Security Key** blank
 8. Check **Start this connection automatically** to connect as the network becomes available.
 9. Click **Next**.
- a. Click **Change Connecting Settings**.

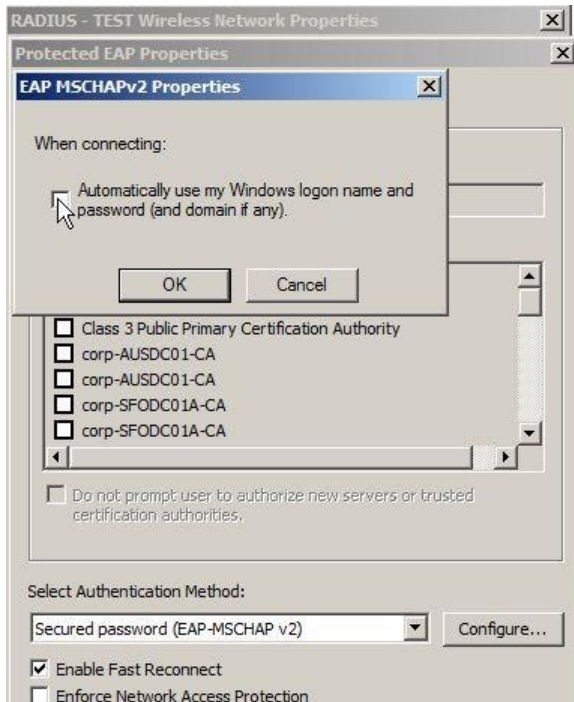


MODIFY SECURITY SETTINGS OF NETWORK PROFILE

1. Select the **Security** tab
2. Ensure **Microsoft: Protected EAP (PEAP)** is selected in the drop down.
3. Click **Settings**.
4. Ensure **Validate server certificate** is **not checked**.



5. Ensure **Connect to these servers** is not selected.
7. Clear the selection for **Do not prompt user to authorize new servers or trusted certification authorities**.
8. Ensure **Secured password (EAP-MSCHAPv2)** is selected under **Select Authentication Method**.
9. Click **Configure** and **clear** the selection for **Automatically use my Windows logon name and password**.



10. Click **OK**.
11. Click **OK**.
12. Click **Advanced settings**
13. Ensure **Specify authentication mode** is selected, and change the drop down to **User authentication**.
14. Click **OK**.
15. Click **OK**.

CONNECT TO THE WIRELESS NETWORK

1. Click on the wireless network icon in the notification area.
2. From the wireless network list, select the **UNET** required and click **Connect**.
3. When prompted, enter your username and password.

If you did not clear the selection for **Automatically use my Windows logon name and password** then you will not be prompted and will not connect

4. You should now be connected to the wireless network.

****Note****

When you change your password for OCSD, you will need to forget the BYOD network and go through these steps again so your password will be updated on the device. The steps to do this are as follows:

- 1. Start Network and Sharing Center.**
- 2. In the Tasks pane, click Manage wireless networks.**
- 3. Right-click the connection you want to delete, and then click Remove network.**
- 4. In the Manage Wireless Networks - Warning dialog box, click OK.**
- 5. Now attempt to reconnect to BYOD.**